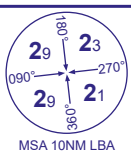
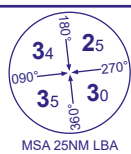
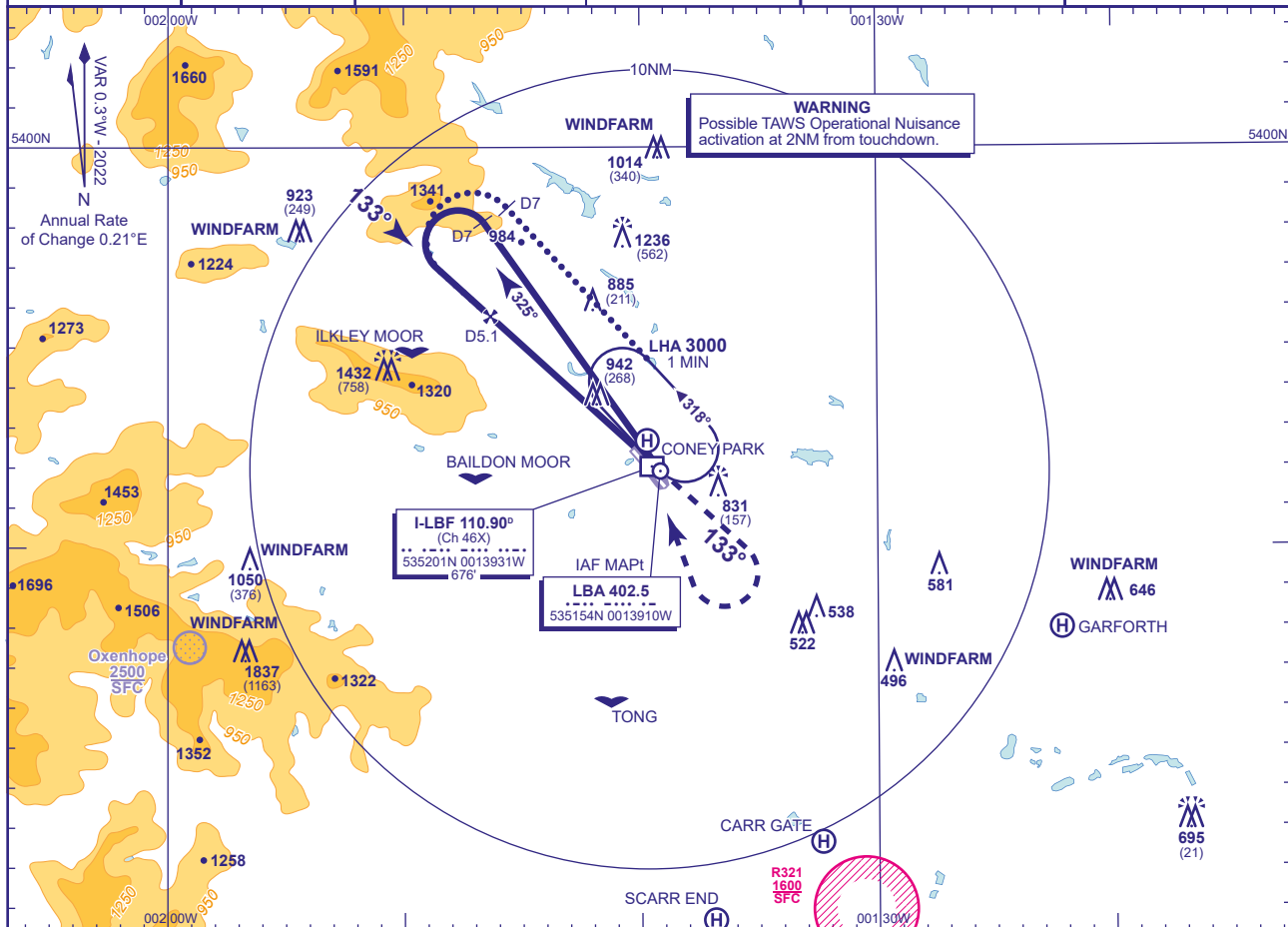


INSTRUMENT APPROACH - ICAO

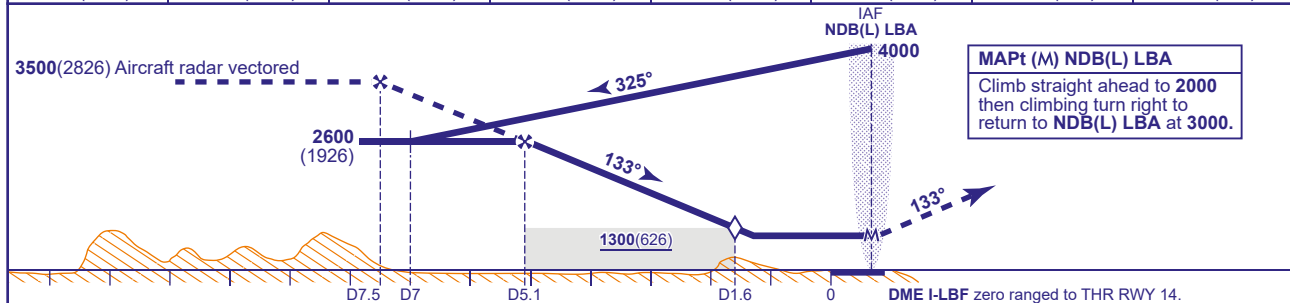
LEEDS BRADFORD
NDB(L)/DME Y
RWY 14
(ACFT CAT A,B)

APP	134.580	LEEDS APPROACH	AD ELEVATION	682
TWR	120.305	LEEDS TOWER	THR ELEVATION	674
RAD	134.580	LEEDS RADAR	OBSTACLE ELEVATION	1837 AMSL (1163) (ABOVE THR)
	125.380	LEEDS DIRECTOR		
ATIS	118.030	LEEDS INFORMATION	BEARINGS ARE MAGNETIC	

TRANSITION ALTITUDE
5000

RECOMMENDED PROFILE Gradient 6.1%, 370FT/NM

DME I-LBF	7	6	5	4	3	2	1.6 (SDF)
ALT(HGT)	3340(2666)	2960(2286)	2590(1916)	2220(1546)	1840(1166)	1470(796)	1300(626)



Aircraft Category	A	B	Rate of descent	G/S KT	160	140	120	100	80
OCA (OCH)	WITH DME	1200(526)	1200(526)	FT/MIN	990	870	750	620	500
	NO DME	1860(1186)	1860(1186)						
VM(C)OCA (OCH AAL)	Total Area	1320(638)	1320(638)						

ALTERNATIVE PROCEDURE EXTENDED HOLDING PATTERN Overhead NDB(L) LBA in holding pattern, turn left and descend on extended outbound leg to 2600(1926). At I-LBF DME 7 turn left onto FAT. When established continue as Main Procedure.

ALTERNATIVE TIMED PROCEDURE AIRCRAFT CAT A,B ONLY

Fly procedures, substituting timing of 3MIN on outbound leg, when established inbound on extended FAT descend to MDH.

- NOTES**
- 1 FAT offset by 5° from RWY C/L.
 - 2 Lowest altitude to commence procedure from hold is 3000.
 - 3 Due to controlled airspace constraints, aircraft may temporarily leave controlled airspace in the baseturn.

CHANGE (8/25): AD ELEVATION. MINIMA. MSA REVISED.